

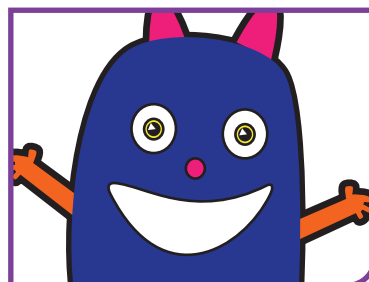
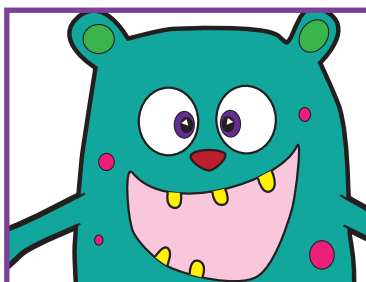
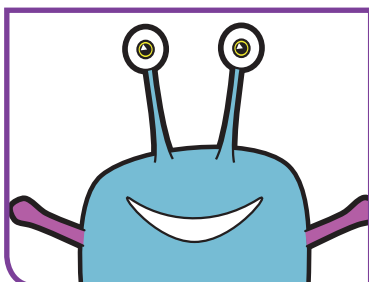
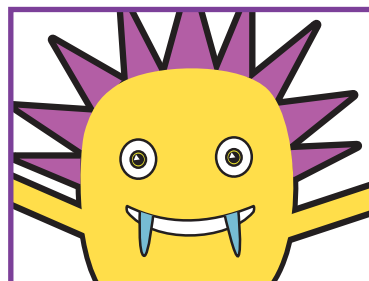
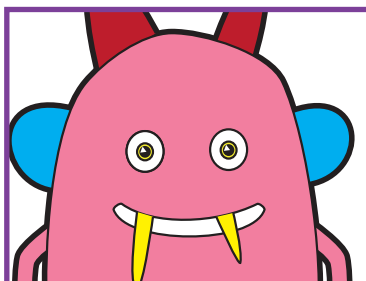
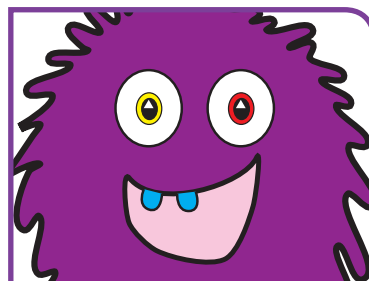
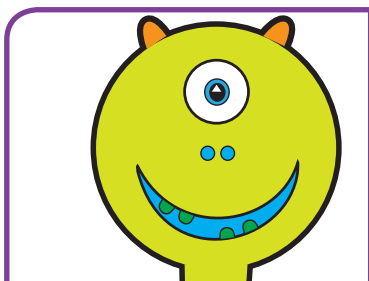
Ph

KEY STAGE  
1

Phonics

## Phonics screening check

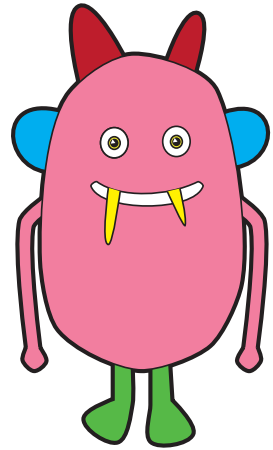
Children's materials



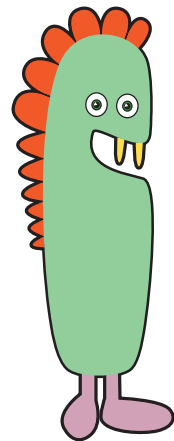
National curriculum assessments

2014

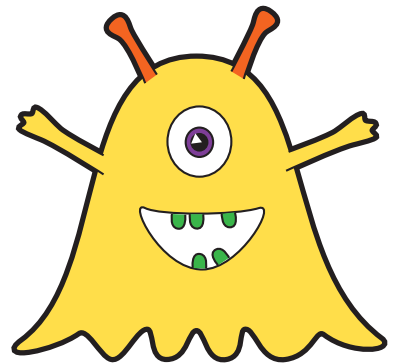
vol



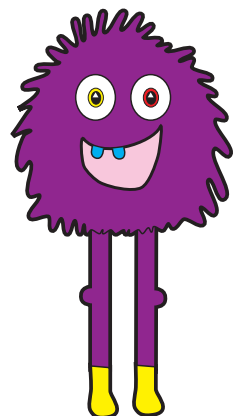
teg



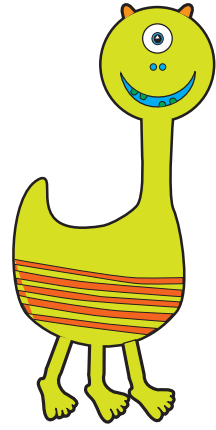
jat



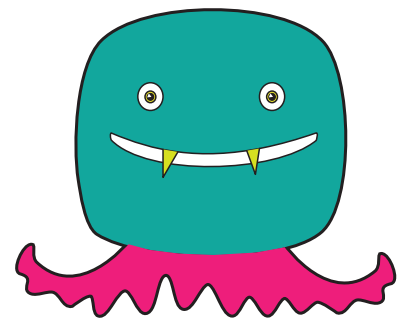
ind



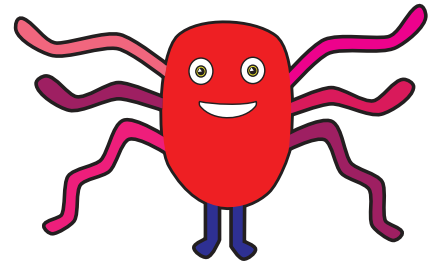
tull



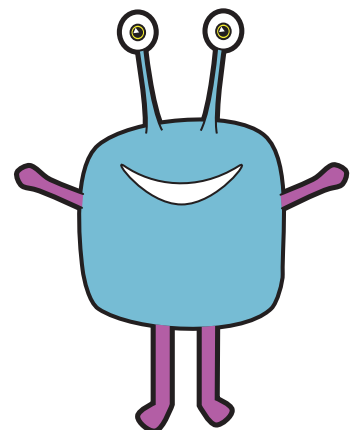
shog



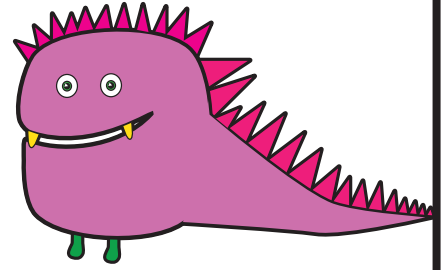
foid



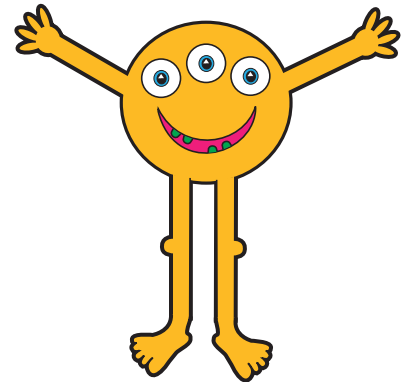
thard



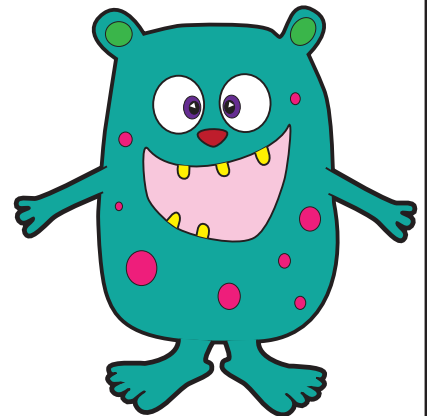
frem



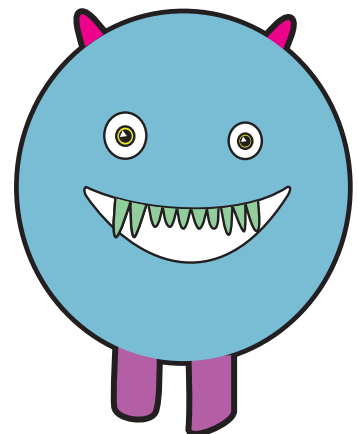
cloin



bulm



harnd



quiz

back

doom

short

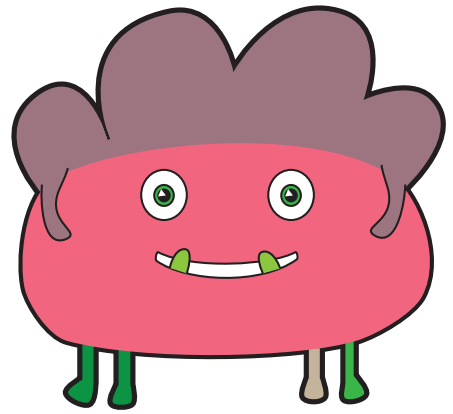
freed

dress

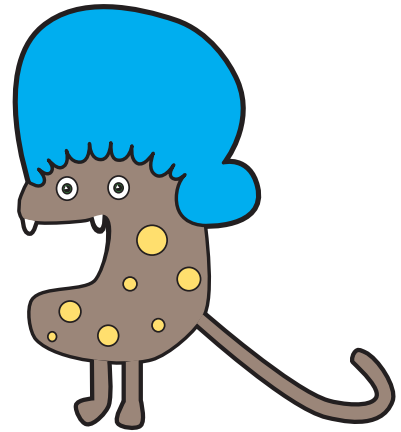
fund

think

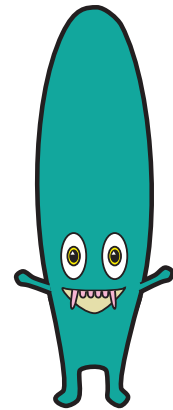
jair



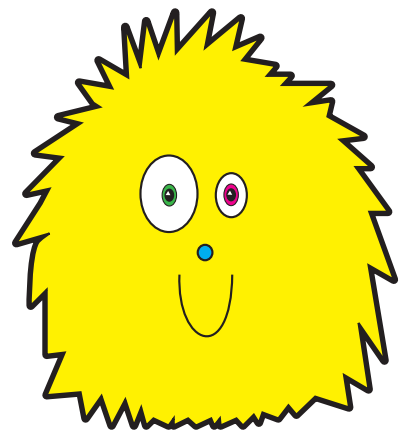
clain



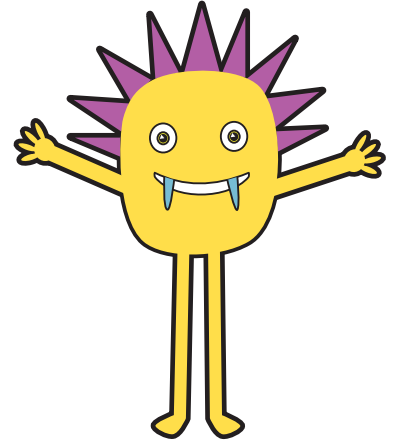
yewn



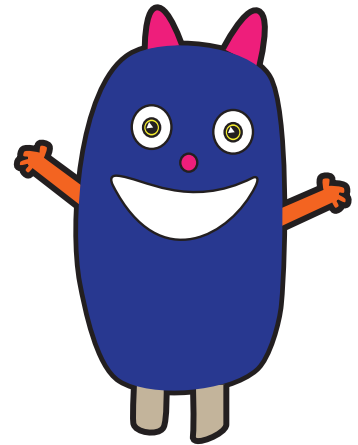
tabe



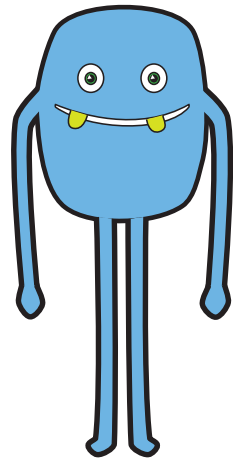
clisk



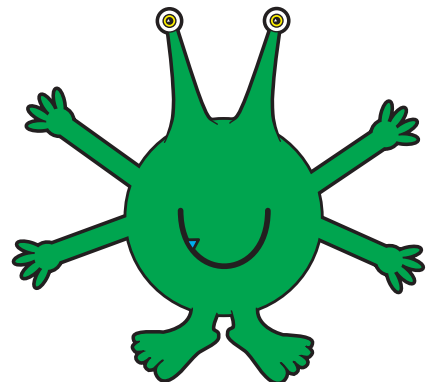
thrand



strad



scroy





nigh

brown

main

rude

drink

crowds

splat

stripe

comic

giving

pumpkin

fighters

**[BLANK PAGE]**

**Please do not write on this page.**

**[BLANK PAGE]**

**Please do not write on this page.**



Standards  
& Testing  
Agency

2014 Key Stage 1 Phonics screening check: children's materials  
Print version product code: STA/14/7079/p ISBN: 978-1-78315-307-7  
Electronic PDF version product code: STA/14/7079/e ISBN: 978-1-78315-312-1

**For more copies**

Additional printed copies of this booklet are not available. It can be downloaded from [www.gov.uk/government/publications](http://www.gov.uk/government/publications).

© Crown copyright and Crown information 2014

**Re-use of Crown copyright and Crown information in test materials**

Subject to the exceptions listed below, the test materials on this website are Crown copyright or Crown information and you may re-use them (not including logos) free of charge in any format or medium in accordance with the terms of the Open Government Licence v2.0 which can be found on the National Archive website and accessed via the following link: [www.nationalarchives.gov.uk/doc/open-government-licence/version/2](http://www.nationalarchives.gov.uk/doc/open-government-licence/version/2).

**Exceptions - third party copyright content in test materials**

You must obtain permission from the relevant copyright owners, as listed in the '2014 key stage 2 test materials copyright report', for re-use of any third party copyright content which we have identified in the test materials, as listed below. Alternatively you should remove the unlicensed third party copyright content and/or replace it with appropriately licensed material.

**Third party content**

These materials contain no third party copyright content.

If you have any queries regarding these test materials contact the national curriculum assessments helpline on 0300 303 3013 or email [assessments@education.gov.uk](mailto:assessments@education.gov.uk).

# Phonics screening check 2014 scoring guidance



Standards  
& Testing  
Agency

## Threshold mark

The threshold mark for the phonics screening check will be available on the Department for Education's website [www.education.gov.uk/ks1](http://www.education.gov.uk/ks1) after Monday 30 June 2014.

If children do not meet the expected standard, schools must determine the most appropriate support for these children to help them catch up. These children must be considered for a re-take of the phonics screening check in the June of Year 2.

## Pronunciation of pseudo-words

Some of the graphemes used in the check represent a number of different phonemes. When decoding a real word in the check, the child has to select the correct phoneme for the word, for example the 'ow' in 'blow' should not be pronounced as the 'ow' in 'cow'. However, when decoding a pseudo-word, all plausible alternative pronunciations are acceptable.

The tables on the next page provide guidance to teachers scoring the check on acceptable pronunciations of the pseudo-words in the check.

## Regional pronunciations

Some of the pseudo-words in the screening check contain vowel digraphs that end with 'r', such as 'ar'. In a small number of regional dialects, the 'r' in words with these vowel digraphs is voiced and children who speak with these dialects will be known to their teachers. For these children, pseudo-words with a vowel digraph ending in 'r', such as 'flarm' may be pronounced as /ðɑ:rd/ or /θɑ:rd/ instead of /ðɑ:d/ or /θɑ:d/. These pronunciations are acceptable alternatives in the relevant pseudo-words.

### Contact details

For more information about the phonics screening check, please contact the national curriculum assessments helpline on 0300 303 3013 or email [assessments@education.gov.uk](mailto:assessments@education.gov.uk).

## Section 1

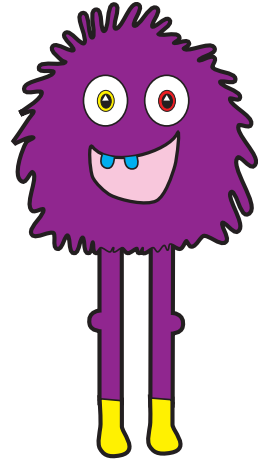
Pseudo-word	Acceptable pronunciations	Phonemic representation
<b>vol</b>	This item uses the 'v' from 'vet' and rhymes with 'doll'.	/vɒl/
<b>teg</b>	This item uses the 't' from 'tip' and rhymes with 'peg'.	/tɛg/
<b>jat</b>	This item uses the 'j' from 'job' and rhymes with 'cat'.	/dʒæt/
<b>ind</b>	This item combines the 'i' from 'ill' and the 'nd' from 'end'.	/ɪnd/
<b>tull</b>	This item uses the 't' from 'time' and rhymes with 'cull'. All regional pronunciations of the 'u' are acceptable.	/tʌl/ or /tʊl/
<b>shog</b>	This item uses the 'sh' from 'sheep' and rhymes with 'fog'.	/ʃɒg/
<b>foid</b>	This item uses the 'f' from 'fine' and rhymes with 'void'.	/fɔɪd/
<b>thard</b>	This item uses either the 'th' from 'this' or the 'th' from 'thin' and rhymes with 'shard'.	/ðɑ:d/ or /θɑ:d/
<b>frem</b>	This item uses the 'fr' from 'frog' and rhymes with 'them'.	/frɛm/
<b>cloin</b>	This item uses the 'cl' from 'climb' and rhymes with 'join'.	/klɔɪn/
<b>bulm</b>	This item combines the 'bul' from 'bulb' and the 'm' from 'mask'. All regional pronunciations of the 'u' are acceptable.	/bʌlm/ or /bʊlm/
<b>harnd</b>	This item uses the 'har' from 'harsh' and ends with the 'nd' from 'stand'.	/hɑ:nd/

## Section 2

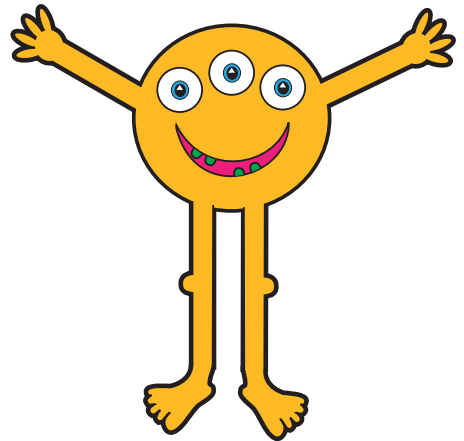
Pseudo-word	Acceptable pronunciations	Phonemic representation
<b>jair</b>	This item uses the 'j' from 'joke' and rhymes with 'lair'.	/dʒɛə/
<b>clain</b>	This item uses the 'cl' from 'clip' and rhymes with 'plain'.	/kleɪn/
<b>yewn</b>	This item uses the 'y' from 'yes' and rhymes with 'strewn'.	/ju:n/
<b>tabe</b>	This item uses the 't' from 'tile' and rhymes with 'babe'.	/teɪb/
<b>clisk</b>	This item uses the 'cl' from 'close' and rhymes with 'whisk'.	/klɪsk/
<b>thrand</b>	This item uses the 'thr' from 'throw' and rhymes with 'sand'.	/ðrænd/ or /θrænd/
<b>strad</b>	This item uses the 'str' from 'strike' and rhymes with 'sad'.	/stræd/
<b>scroy</b>	This item uses the 'scr' from 'scream' and rhymes with 'boy'.	/skrɔɪ/



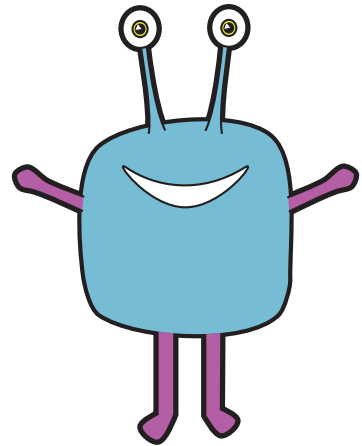
ot



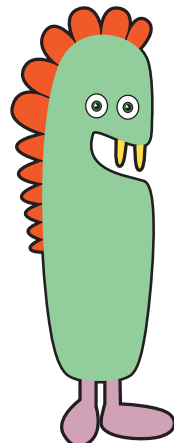
vap



osk



ect



in

at

beg

sum

# Screening check: answer sheet

First name	
Last name	

**Screening check responses:** Please tick the appropriate box for each word. The use of the comment box is optional.

Section 1			
Word	Correct	Incorrect	Comment
vol			
teg			
jat			
ind			
tull			
shog			
foid			
thard			
frem			
cloin			
bulm			
harnd			
quiz			
back			
doom			
short			
freed			
dress			
fund			
think			

Section 2			
Word	Correct	Incorrect	Comment
jair			
clain			
yewn			
tabe			
clisk			
thrand			
strad			
scroy			
nigh			
brown			
main			
rude			
drink			
crowds			
splat			
stripe			
comic			
giving			
pumpkin			
fighters			

<b>Total correct</b>	
----------------------	--